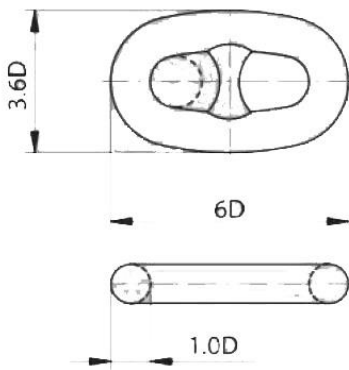
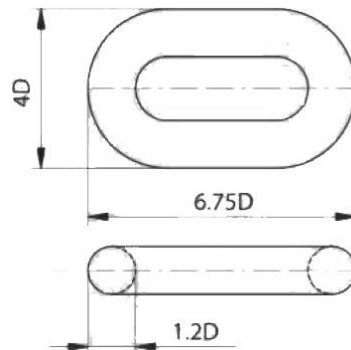


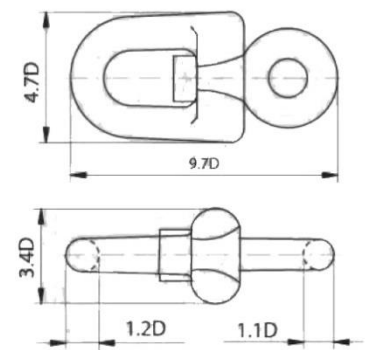
## CHAIN, MARINE



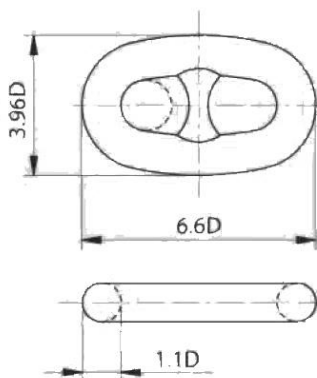
Common link=C



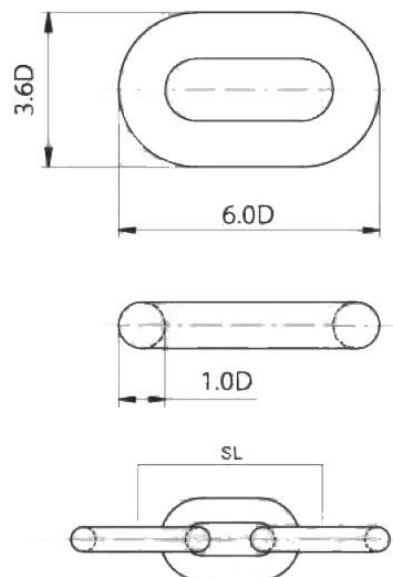
End link=E



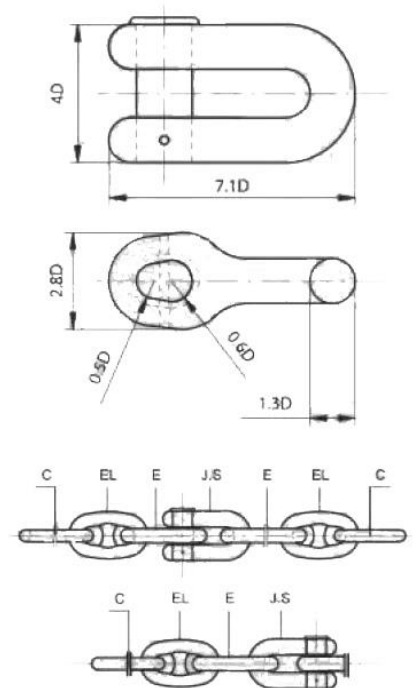
Swivel=SW



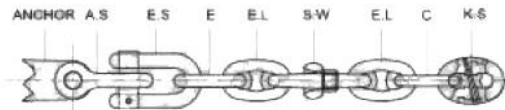
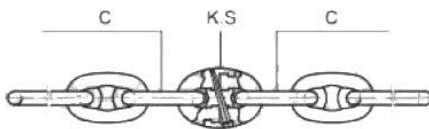
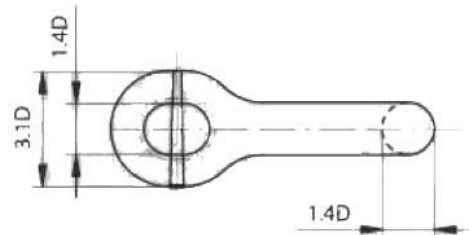
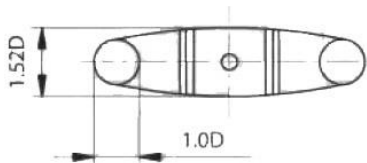
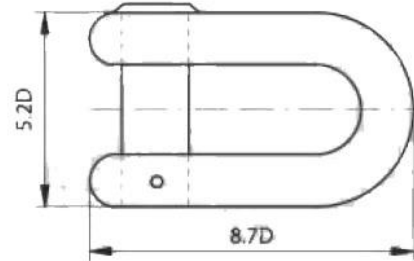
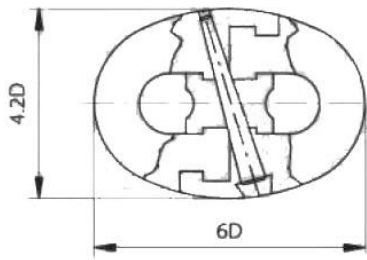
Enlarged link=EL



Studless link=SL

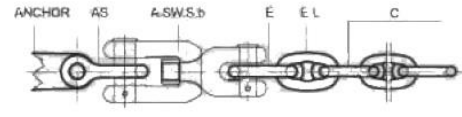
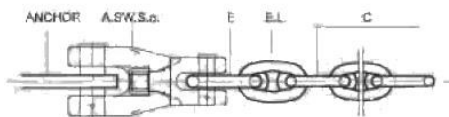
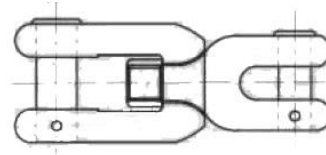
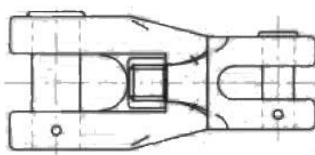


Joining shackle=JS



Kenter Shackle=KS

End Shackle=E.S



Anchor Swivel Shackle(a)=A.S.W.S(a)

Anchor Swivel Shackle(b)=A.S.W.S(b)























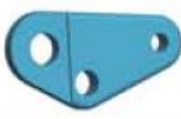



Chain Diameter (mm)	Stud Link Chain, length of 27.5 m (Kg)	Common Link (Kg)	Enlarged Link (Kg)	End Link (Kg)	Kenter Shackle (Kg)	Joining Shackle (Kg)	End Shackle (Kg)	Swivel (Kg)	Anchor Swivel Shackle A (Kg)	Anchor Swivel Shackle B (Kg)
14	128	0.26	0.39	0.32	0.6	0.67	1.50	1.05	-	-
16	150	0.35	0.49	0.57	0.65	0.95	1.52	1.34	-	-
17.5	197	0.50	0.66	0.67	0.88	1.34	2.05	1.73	-	-
19	236	0.66	0.85	1.06	1.13	1.84	2.41	2.17	-	-
20.5	268	0.80	1.02	1.06	1.36	2.20	3.25	2.20	-	-
22	324	1.04	1.30	1.58	1.64	2.66	3.95	3.50	21	7.6
24	370	1.30	1.65	1.84	2.13	3.40	5.12	4.53		9.9
26	431	1.64	2.03	2.74	2.58	4.50	6.70	5.79	42	12.5
28	496	2.04	2.48	3.23	3.3	5.19	8.10	7.25		15.7
30	563	2.48	3.58	3.74	4.15	6.32	10	9	97	19.4
32	635	2.98	4.45	4.74	5.06	8.24	11.77	10.03		23.4
34	712	3.54	5.21	5.54	6.01	9.56	14.20	12.75	116	28
36	800	4.23	5.99	6.65	6.59	11.31	16.55	14.96		33.4
38	888	4.96	6.15	7.66	8.4	13.45	19.55	17.44	125	39.4
40	1033	6.04	8.01	8.20	9.63	15.50	22.80	20.25		46
42	1084	6.65	9.04	9.92	11	18.10	26	25.40	156	53
44	1194	7.73	10.25	11.42	12.45	20.25	29.71	26.60		61
46	1310	8.80	11.54	13.92	14.10	23.33	34.30	30.67	284	70
48	1438	10.06	14.44	15.67	16.70	27.50	38	35		79
50	1546	11.28	16.06	17.70	19	31.60	45.20	40.50	294	89
52	1661	12.68	17.85	18.97	20.30	34	50.90	49.50		101
54	1791	14.10	19.60	20.84	23.70	38.50	53.80	50.50	323	113
56	1926	15.66	21.69	23.55	26.70	46	63	55		126
58	2086	17.83	24.00	25.95	27.20	46.80	70	64.60	458	140
60	2249	19.90	26.00	28.48	27.70	51	77.50	71.30		155
62	2361	21.66	28.63	30.81	35	59.20	86.30	77.70	522	171
64	2516	23.51	31.13	32.70	38.40	62.70	96.30	83.30		188
66	2676	25.98	35.00	38.40	42.30	75	99.60	88.70	815	206
68	2885	28.60	39.72	39.50	46	76.7	102.60	100		225
70	3010	31.00	43.33	43.80	48.70	90	126.20	107.80	1007	246
73	3274	35.20	48.30	49.00	53	95	138.20	125.60		278
76	3548	39.90	53.60	57.10	60.70	107	146	143.80	1300	314
78	3737	43.00	59.90	62.30	65.50	116	164	154		340
81	4030	48.60	66.00	67.40	75	130	190	188	1610	380
84	4334	53.50	69.00	74.40	90	136	212	198		424
87	4650	58.90	81.10	84.60	96	160	237	215	2022	472
90	4976	66.35	88.00	91	108	176	245	238		522
92	5199	71.22	97.50	100	114	196	257	252	2336	558
95	5544	83.77	107	117	133	222	335	301		614
97	5780	89.03	120	127	146	252	353	330	1827	654
100	6143	95.50	130	134	158	267	378	344		717
102	6398	104.20	139	150	160	294	385	387	2636	761
105	6773	111.63	148	160	180	305	420	428		830
107	7033	124.08	161	171	198	325	463	448	2336	879
111	7569	135.31	168	190	204	345	485	460		980
114	7983	147.53	177	209	225	365	528	475	2336	1062
117	8409	155.49	204	229	250	400	570	547		1147
120	8863									1131

Chain Diameter (mm)	Stud Link Chain, length of 27.5 m (Kg)	Common Link (Kg)	Enlarged Link (Kg)	End Link (Kg)	Kenter Shackle (Kg)	Joining Shackle (Kg)	End Shackle (Kg)	Swivel (Kg)	Anchor Swivel Shackle A (Kg)	Anchor Swivel Shackle B (Kg)
122	9143	166.24	218	234	263	425	602	649	2636	1199
124	9399	170.90	228	246	290	465	632	680		1297
127	9830	185.47	244	269	312	499	679	729	2960	1427
130	10300	194.34	264	293	333	536	729	784		1560
132	10620	208.24	270	298	350	561	762	820		1662
137	11439	233.45	298	329	392	627	852	912	3309	1883
142	12289	261.47	333	383	436	698	949	1012	3685	2116
147	13170	297.67	377	419	485	774	1053	1124	4088	2537
152	14081	312.91	416	458	537	856	1164	1238	4520	2611
157	15023	349.37	450	499	591	943	1283	1360	4980	2891
162	15995	390.12	496	542	651	1036	1410	1490	5470	3197

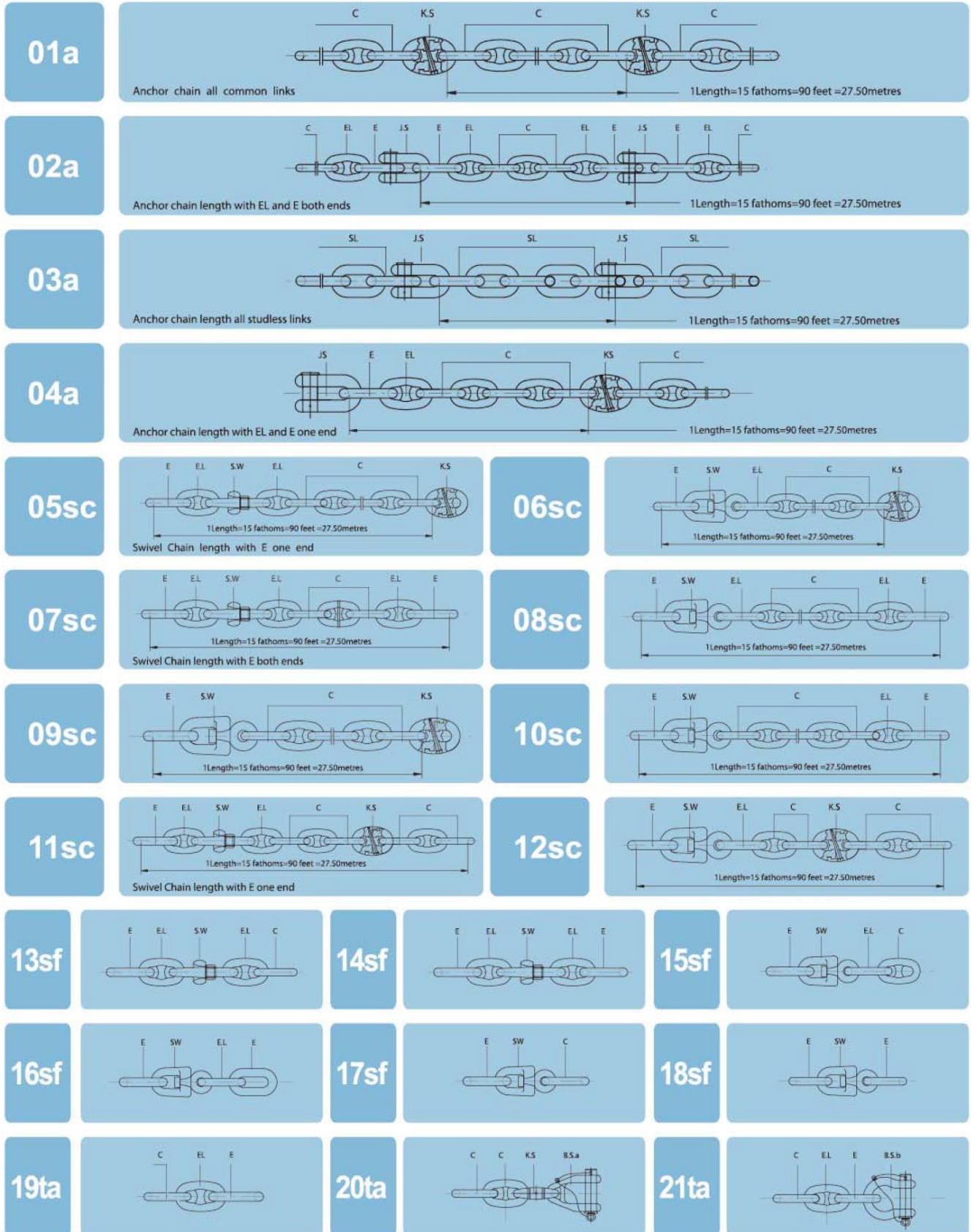
Chain Diameter (mm)	Working Load Limit (KN)			Breaking Load (LN)			Weight of Per Length of 27.5m (Kg)
	Grade 1	Grade 2	Grade 3	Grade 1	Grade 2	Grade 3	
14	58	82	-	82	115	-	
16	76	107	150	107	150	216	160
17.5	89	127	179	127	179	256	190
19	105	150	211	150	211	301	225
20.5	123	175	244	175	244	349	265
22	140	200	280	200	280	401	300
24	167	237	332	237	332	476	360
26	194	278	389	278	389	556	420
28	225	321	449	321	449	642	490
30	257	368	514	368	514	735	565
32	291	417	583	417	583	833	635
34	328	468	655	468	655	937	720
36	366	523	732	523	732	1050	800
38	406	581	812	581	812	1160	895
40	448	640	896	640	896	1280	995
42	492	703	981	703	981	1400	1100
44	538	769	1080	769	1080	1540	1200
46	585	837	1170	837	1170	1680	1320
48	635	908	1280	908	1280	1810	1440
50	686	981	1370	981	1370	1960	1560
52	739	1060	1480	1060	1480	2110	1675
54	794	1140	1590	1140	1590	2270	1820
56	851	1220	1710	1220	1710	2430	1935
58	909	1290	1810	1290	1810	2600	2075
60	969	1380	1940	1380	1940	2770	2220
62	1030	1470	2060	1470	2060	2940	2365
64	1100	1560	2190	1560	2190	3130	2550
66	1160	1660	2310	1660	2310	3300	2695
68	1230	1750	2450	1750	2450	3500	2890

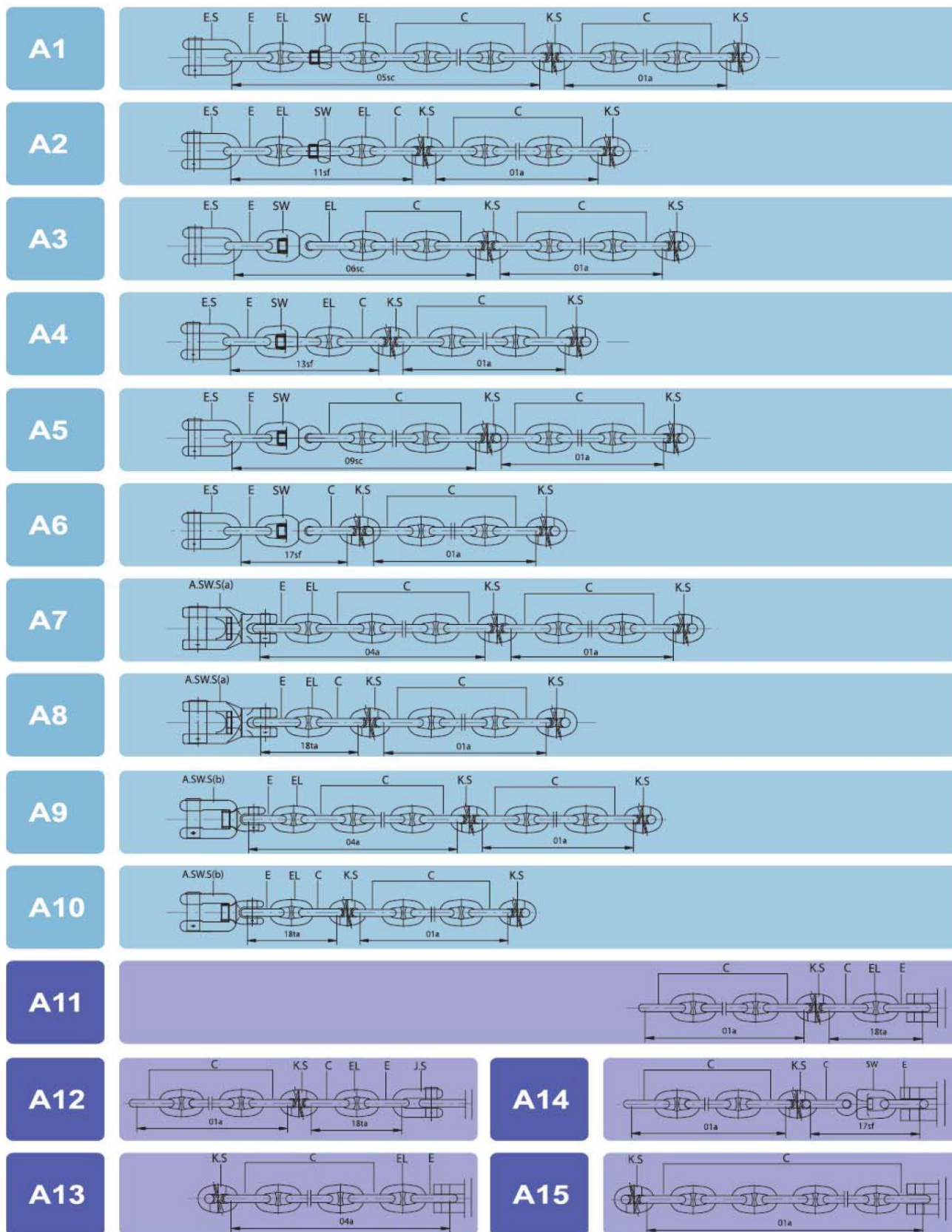
Chain Diameter (mm)	Working Load Limit (KN)			Breaking Load (LN)			Weight of Per Length of 27.5m (Kg)
	Grade 1	Grade 2	Grade 3	Grade 1	Grade 2	Grade 3	
70	1290	1840	2580	1840	2580	3690	3030
73	1390	1990	2790	1990	2790	3990	3290
76	1500	2150	3010	2150	3010	4300	3550
78	1580	2260	3160	2260	3160	4500	3755
81	1690	2410	3380	2410	3380	4820	4035
84	1810	2580	3610	2580	3610	5160	4395
87	1920	2750	3850	2750	3850	5500	4760
90	2050	2920	4090	2920	4090	5840	5005
92	2130	3040	5260	3040	5260	6080	5200
95	2260	3230	4510	3230	4510	6440	5570
97	2340	3350	4680	3350	4680	6690	5760
100	2470	3530	4940	3530	4940	7060	6130
102	2560	3660	5120	3660	5120	7320	6505
105	2700	3860	5390	3860	5390	7700	6885
107	2790	3980	5570	3980	5570	7690	7140
111	2970	4250	5940	4250	5940	8480	7715
114	3110	4440	6230	4440	6230	8890	8085
117	3260	4650	6510	4650	6510	9300	8445
120	3400	4860	6810	4860	6810	9720	9110
122	3500	5000	7000	5000	7000	9990	9240
124	3600	5140	7200	5140	7200	10280	9700
127	3750	5350	7490	5350	7490	10710	10040
130	3900	5570	7800	5570	7800	11140	10420
132	4000	5720	8000	5720	8000	11420	10910
137	4620	6080	7510	6080	7510	12160	11720
142	4520	6450	9030	6450	9030	12910	12515
147	4790	6840	9560	6840	9560	13660	13295
152	5050	7220	10100	7220	10100	14430	14695
157	5320	7600	10640	7600	10640	15200	15475
162	5590	7990	11170	7990	11170	15970	16210

## Fittings

MK01(KS) 	MK02(SKS) 	MK03(PKL) 	MD01(ES) 	MD02(JS) 	
MD03(E.JS) 	MD04 	MSW01(SW) 	MSW02(ASWS) 	MSW03(BSWS) 	
MC01(CL) 	MC02(PCL) 	MC03(EPCL) 	MP01(STP) 	MP02(CTP) 	
MB01(KS40/50) 	MHL01(HS) 	MHL02(SHS) 	MHK01(40/50) 	ML01(RSL) 	ML01(SLC) 
CCA(CP) 	CCA(TP) 	CCA(OP) 	CCA(PS42T) 	CCA(PS55T) 	

## Joining Forms (K.S) to Anchor and Locker Ends

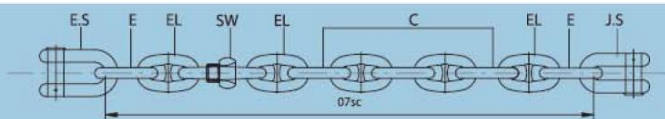




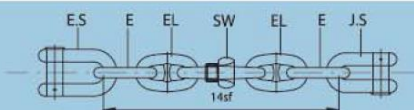


## Joining Forms (J.S) to Anchor and Locker Ends

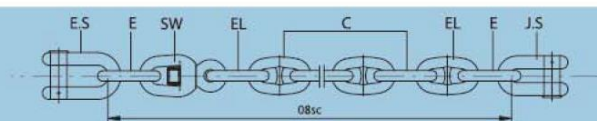
B1



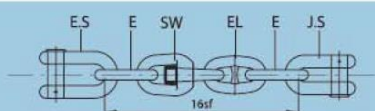
B2



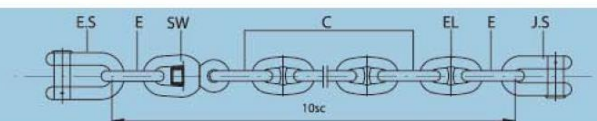
B3



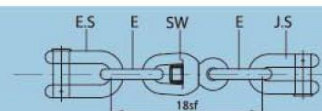
B4



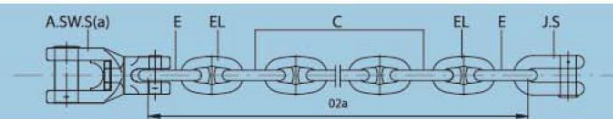
B5



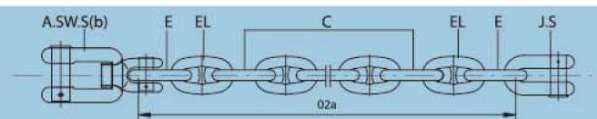
B6



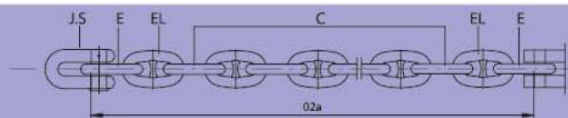
B7



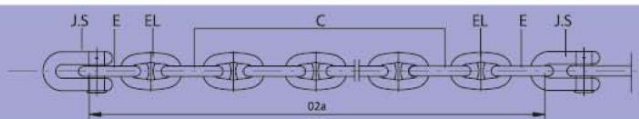
B8



B9



B10



B11

