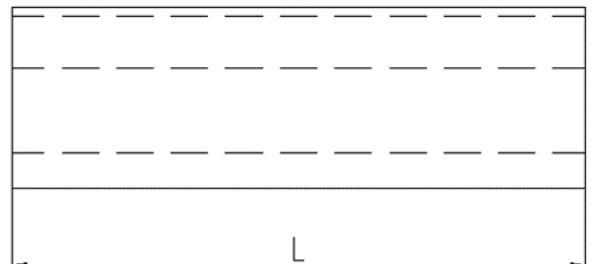
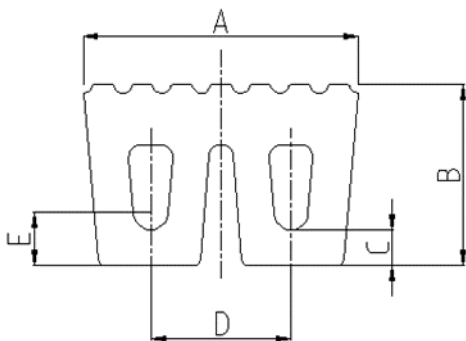


## W fender



TYPE	A (mm)	B (mm)	C (mm)	D (mm)	E (mm)	Weight per meter (Kg/m)	Length max (mm)
W320×200	320	200	50	180	67	52	2000
W480×300	480	300	58	245	88	131	2900
W500×330	500	330	65	248	90	150	2000
W500×400	500	400	74	270	99	169	2000
W500×450	500	450	75	255	100	187	2500
W600×400	600	400	58	405	78	233	2000