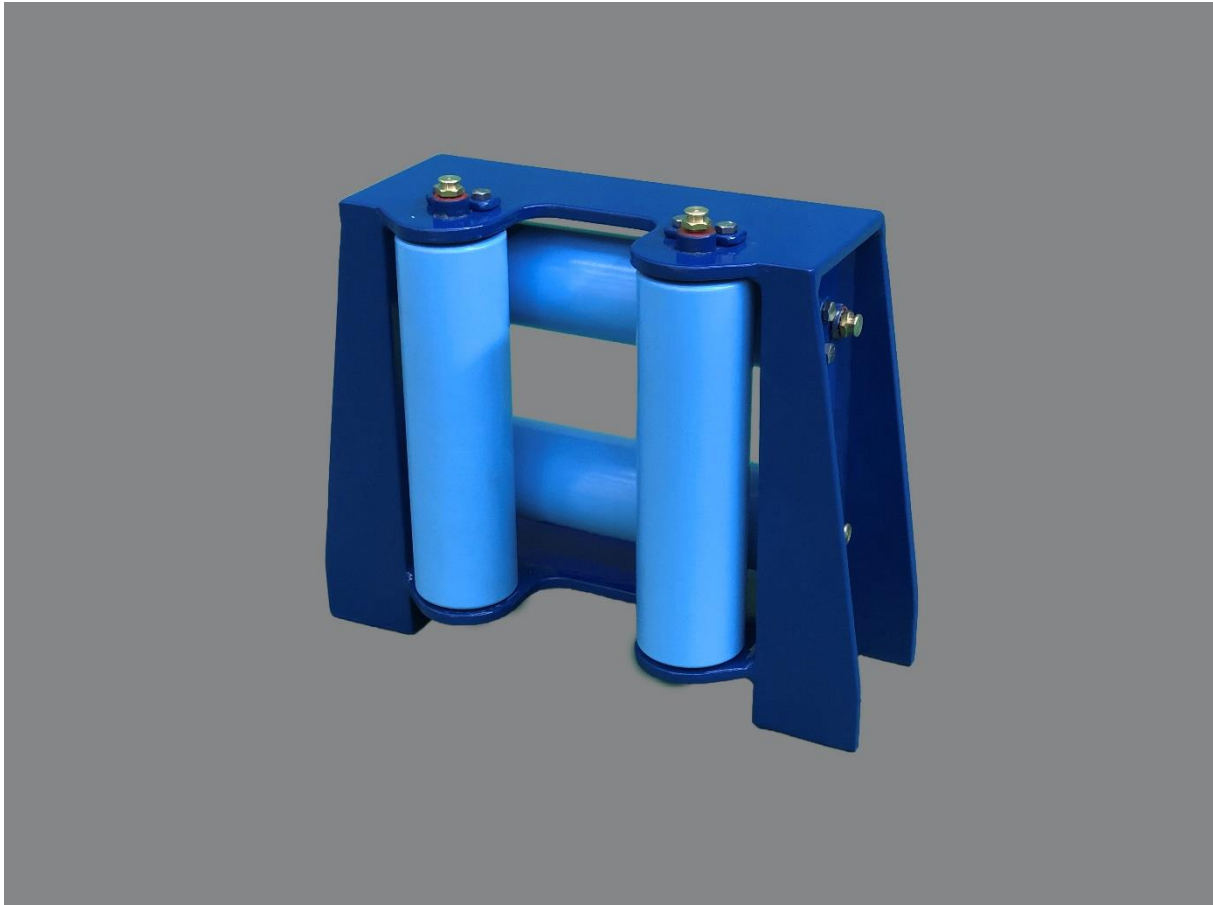


Product sheet DIN 81902 Roller Fairlead



Roller Fairleads are used on board of all kind of vessels, we deliver the DIN 81902 type, which is executed with greasing lines and grooves and have flat type grease nipples.

Roller fairleads can be used both deck mounted or bulwark mounted.

Deliverance options

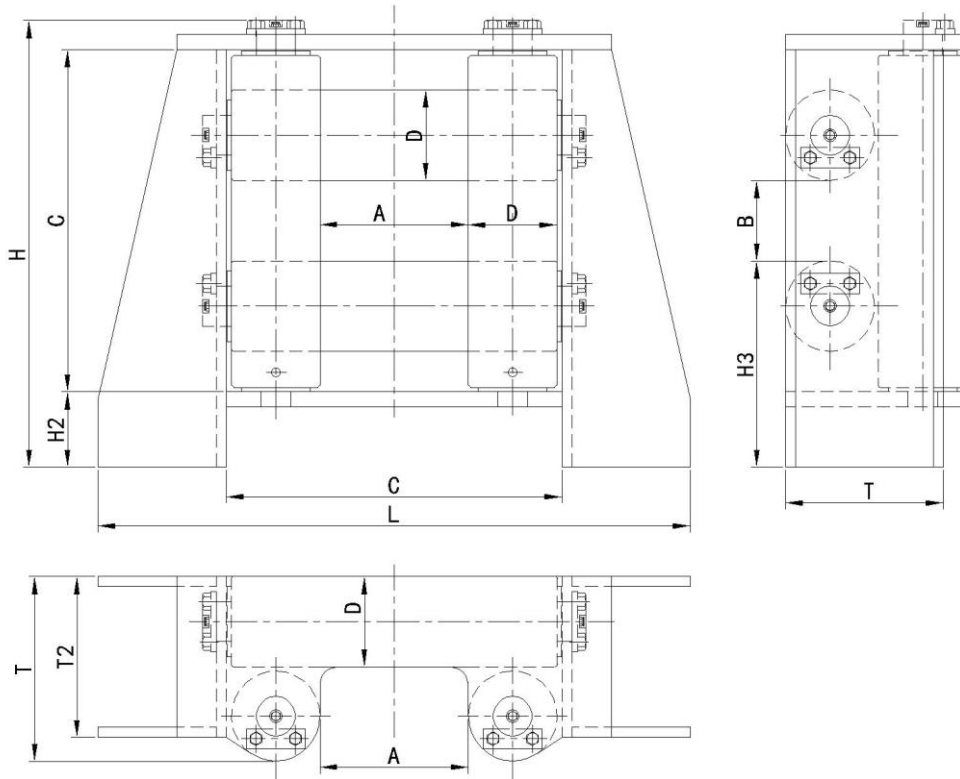
- Single roller (a shown on the picture above)
- Multi roller upon request

Deliverance includes

- Welding primer

Deliverance excludes

- Grease, so you can fill it with your lubricant of choice



Product Type	Nom Pull (KN)	L (mm)	T (mm)	H (mm)	A (mm)	B (mm)	C (mm)	D (mm)	T2 (mm)	H2 (mm)	H3 (mm)	Weight(kg)
FA-01	10	460	130	348	120	80	260	60	120	70	160	30
FA-02	20	640	174	464	180	100	364	82	160	80	212	68
FA-03	30	800	219	579	220	120	454	102	180	100	267	140
FA-05	50	900	264	676	250	140	524	127	240	120	312	251
FA-08	80	1000	290	757	280	150	580	140	260	140	355	382
FA-12	120	1200	368	876	300	160	680	178	320	150	410	657
FA-16	160	1300	400	948	320	169	732	194	350	170	452	827
FA-20	200	1350	500	1082	340	180	856	244	450	180	518	1193
FA-32	320	1700	608	1355	400	250	1026	298	550	220	608	2200